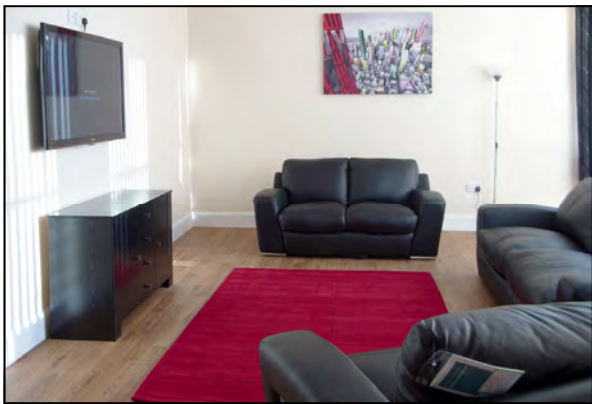




## Auton Villa Children's Home Newcastle upon Tyne



Auton Villa  
West Denton, Newcastle upon Tyne, NE15 7LT

Tel: 0191 264 8925 Fax: 0191 267 4383

Email: [auton.villa@stcuthbertscare.org.uk](mailto:auton.villa@stcuthbertscare.org.uk)

Website: [www.autonresidentialchildcare.org.uk](http://www.autonresidentialchildcare.org.uk)



## Welcome

Welcome to Auton Villa, our children's residential care home. Here we support children and young people who are in need of care, encouragement and stability, and may have had multiple placement breakdowns in the past. Placement admissions are planned and, where possible, include pre visits. My staff and I work with our children and young people to support them in making their own decisions about their lives, and to teach them how to replace negative, often self-destructive behaviour patterns with alternative methods of coping. We encourage young people to recognise their own strengths, individuality and potential for development and independence.



If you have any questions about Auton Villa which are not addressed in this brochure, please do not hesitate to contact me.

Best wishes,

*Kerry*

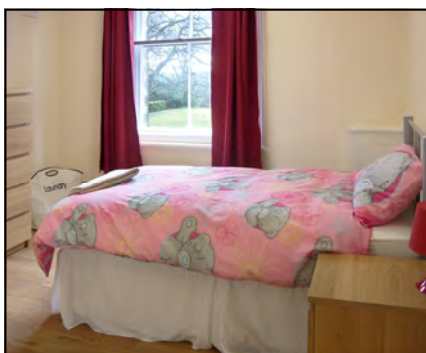
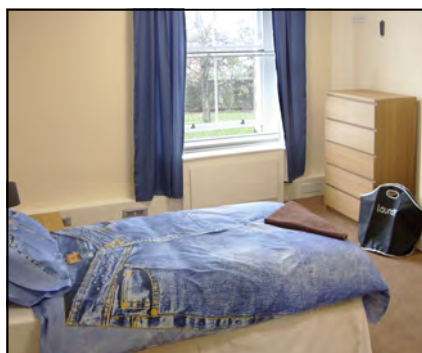
Kerry Wilson-Pearce, Registered Manager

## Our aim

We provide a non-institutional, therapeutic living environment where young people can learn to value and develop personal relationships by providing situations and experiences that encourage trust, self-esteem and mutual respect. We provide a child-centred environment to enable young people to receive positive role modelling and guidance through continuity of reliable relationships and consistent nurturing care. We create a safe, non-judgemental environment to encourage age appropriate development and positive future outcomes. We work in close partnership with other agencies to ensure the stability and wellbeing of the placement along with optimal opportunities for the young person.

## Accommodation

At Auton Villa there is accommodation for six children of both genders from age 8—17 years old. All children have their own lockable bedrooms, which can be personalised to reflect their own identity and encourage a sense of belonging. There is a lounge and separate dining room, as well as a play/homework room which offers a child-friendly environment with soft furnishings, games, craft facilities and books.



## Staff

Auton Villa is run by manager, Kerry Wilson-Pearce, and a team of highly qualified staff. Each one of our staff members acts as an excellent role model for our children and young people, setting clear boundaries whilst also encouraging personal development, confidence and self-esteem.

There is a high child-to-staff ratio at all times, and there is always a senior member of staff on duty. Our experienced team works closely with health professionals to help and support our children and young people with any medical or emotional problems they may be facing.

## Facilities and activities

Auton Villa is surrounded by a large garden where we encourage the children to have fun, as well as participate in its upkeep and maintenance. Our children join us in planting flowers, as well as fruit and vegetables which are later used in their cooking.

Inside the home, our children have access to a number of leisure activities including television, radio, arts and crafts, internet access and a games console.

Activities outside of school and the home are a recognised part of the children's development and we encourage participation in age appropriate activities, for example swimming, trampolining and football training.

There is an additional indoor area, situated in the same grounds, which can be used for contact and visitors, individual work or as a separate play area.



## Individual care and support

All our residents at Auton Villa receive care and support based on an assessment of both their needs and their strengths. Each has an **Individual Care Plan**, drawn up in consultation with social workers and other professionals, which is regularly revised as the young person develops and progresses.

We recognise that, whenever possible, children and young people need regular, constructive contact with family, friends and other people who play major roles in their lives. The care plan includes the arrangements for each child's contacts and these too are regularly monitored and revised as necessary.

Our children and young people are always involved in all discussions and decisions that affect changes to their plan.

In addition, each child has a detailed **Education File** recording their educational history and their specific needs and aspirations. Working in close partnership with Local Education Authorities, we support them in their school placements. We encourage them to become involved with the local community, which assists in developing their social skills, independence and self-esteem.

Residence at Auton Villa provides a **period of stability**, with time for each young person to consider a range of possibilities open to them after their stay. This can be a transition into foster care, a return to their own family, a move towards independent supported living, or provision of a long-term placement at Auton Villa.

We take a proactive approach to **health issues**; ensuring that young people have a healthy and balanced diet, encouraging them to take part in regular leisure activities and providing advice on risks such as drug and solvent abuse, smoking and sexual health matters.

The young person's **cultural background** is always taken into account as an important factor when identifying their needs. We actively support visits to local places of worship, developing cultural links within the community and embracing cultural diversity.

While the best interests of our young people are always paramount in their care and support, we endeavour at all times to respect their privacy, confidentiality, diversity and equality.

## Referral process

Children are admitted by referral from children's social care, following a pre-admission risk assessment and a discussion by an internal panel about the suitability of each placement.

If there is a place available in the home, a key worker is appointed who, along with the manager, spends time with the child or young person to explore their understanding and expectations of the placement. An induction process then begins, which can include an overnight stay. If there are no vacancies at the time of referral, the child's name can be placed on a waiting list.

## Criteria for admission

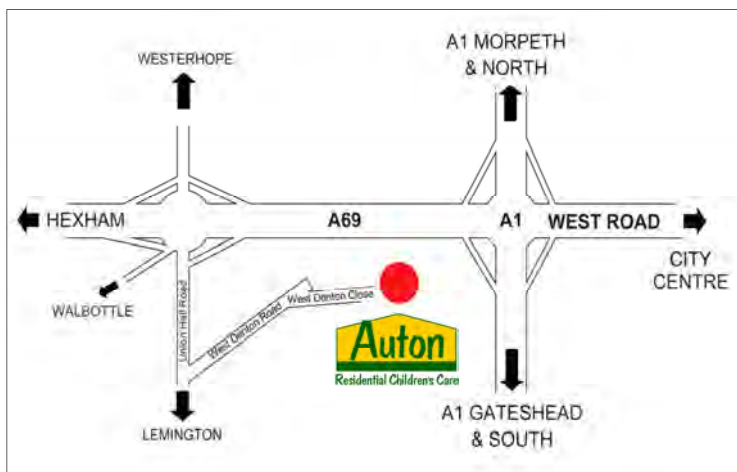
Auton Villa will accept referrals where:

- The child is aged between eight and 17 years old on admittance of placement; *and*
- The child is in need of a placement, either because he/she is new to children's services or because his/her previous accommodation arrangements have broken down; *or*
- The child is an adolescent and it is felt he/she would benefit from a period of stability and individually tailored support before being supported with a view to independent living; *or*
- The placing authority has completed its own assessment and it has been highlighted that the individual may benefit from a therapeutic environment with an open-ended period of stability to work on individual targets and outcomes to secure a positive future; *or*
- There is an indication that the child would benefit from being accommodated to enable an assessment to be carried out, the outcomes of the assessment can be transferred with the young person.

## Regulating standards

Auton Villa is regularly inspected by Ofsted and continually works to achieve the highest form of recognition.

## How to Find Us



### By car from the A1

Take the turning for the A69 signposted towards Hexham off the A1 motorway.

Pass under two footbridges and after the second bridge take the slip road signposted Lemington. At the roundabout take the first exit onto Union Hall Road signposted Lemington Cemetery & Village.

Turn left at the traffic lights onto West Denton Road signposted Claremont Avenue and continue on this road all the way down to into the entrance for the Centre.

### By bus from Newcastle city centre

There is a bus stop outside the Centre. Numbers 10, 39, 40, 684 and X82 stop here. Ask for the Alan Shearer Centre or the stop before Lemington Road Ends.

For bus times visit [www.nexus.org.uk](http://www.nexus.org.uk) or ring Traveline on **0871 200 22 33**.

### By Train

Newcastle Central is the nearest station. There are taxi ranks outside the station or you can take bus number 10.

Further information on the full range of children's services provided by St Cuthberts Care can be obtained from **Sheila Errington, Director of Developments, St Cuthberts Care**

St Cuthberts House, West Road, Newcastle upon Tyne, NE15 7PY

Telephone: 0191 228 0111 | Fax: 0191 228 0177

Direct Line: 0191 228 8003 | Mobile: 0781 311 7758

Email: [sheila.errington@stcuthbertscare.org.uk](mailto:sheila.errington@stcuthbertscare.org.uk)

Website: [www.stcuthbertscare.org.uk](http://www.stcuthbertscare.org.uk)

Company Limited by Guarantee. Company Registration No. 1645917.  
Registered Charity No. 512912



**St Cuthberts Care**

Enabling People